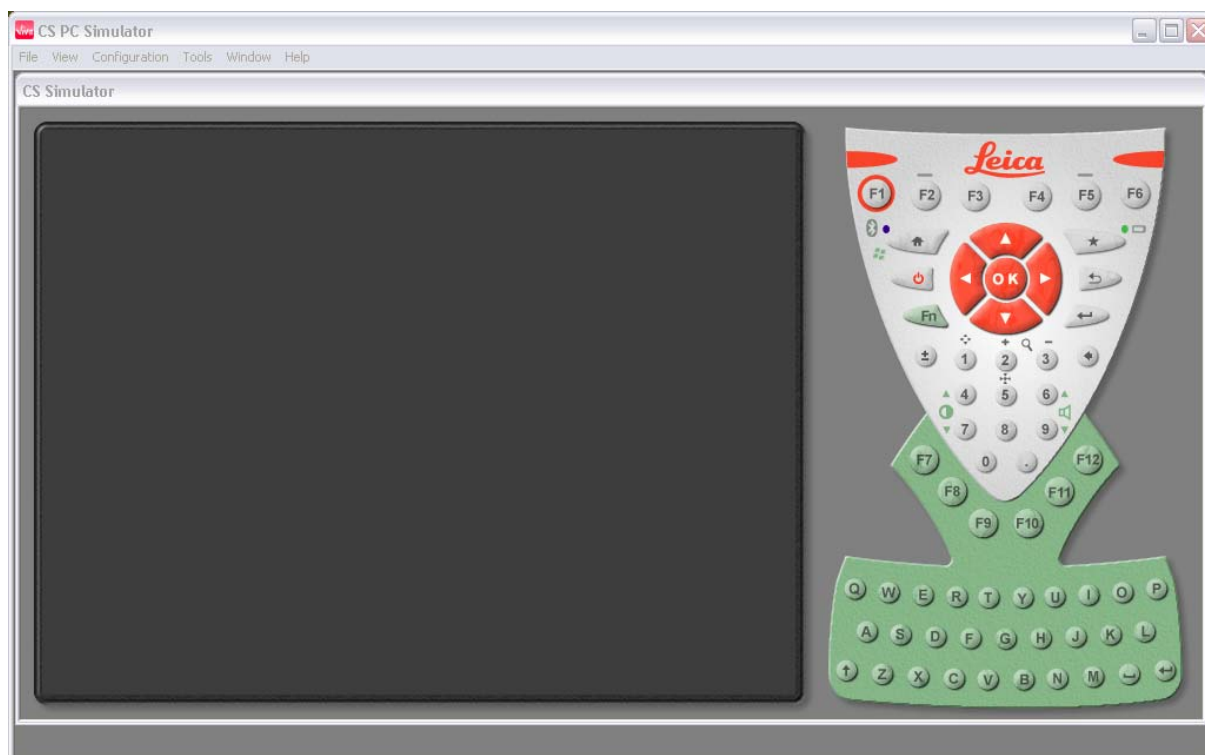


## Leica Viva Simulator Installation and FAQs



### Contents

Introduction.....	2
Installation .....	2
FAQs .....	3



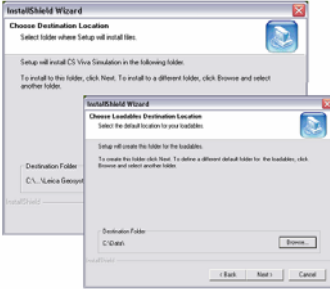

1. How can I check if I have the right .Net Framework installed?
2. Can I configure the Simulator to, run SmartWorx Viva or Viva LT & to be a CS10 or CS15?
3. Can I simulate TPS measurements with the simulator?
4. Can I simulate GPS measurements with the simulator?

## Introduction

The PC Simulator for Leica Viva CS allows users to simulate SmartWorx Viva (or SmartWorx Viva LT) running on a CS10 or CS15 controller. The simulator runs the software as if it was an actual controller, meaning it can be used for training, support, demonstrations and even to create/test settings (e.g. for the creation of working styles and RTK profiles).

## Installation

Installation is an uncomplicated process; the following steps should be used:

Step	Descriptions	Image
.1.	<p>From the folder containing the simulator installation files; select Setup.exe, run this file and then press “next” to begin the installation</p> <p>Then follow the onscreen instructions...</p>	
.2.	<p>When the ‘License Agreement’ is shown, read the agreement carefully then accept the terms to continue</p>	
.3.	<p>When prompted select the destination folders for the:</p> <ul style="list-style-type: none"> <li>• Installation files</li> <li>• Loadable content i.e. the apps and SD &amp; CF card folders</li> </ul>	
.4.	<p>Once the installation wizard has finished the simulator can be run normally</p> <p><i>Note: The simulator requires that “.Net Framework 2.0” or higher is installed – See FAQ 1 for more details.</i></p>	

## FAQs

<b>Q.1.</b>	How can I check if I have the right .Net framework installed?
<b>A.1.</b>	<p>To view what .Net framework is installed on a computer enter into: <b>Control Panel &gt; Add or Remove Programs</b> and scroll down this list looking for “Microsoft .NET Framework x.x”, the x.x will be the version of .NET framework installed. For the simulator to perform correctly version 2.0 or higher is needed.</p> <p>If the computer does not have at least version 2.0 then the latest versions can be downloaded and installed from <a href="http://www.microsoft.com">www.microsoft.com</a></p>

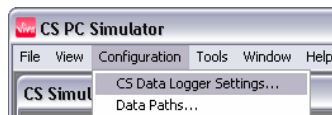
<b>Q.2.</b>	Can I configure the Simulator to: <ul style="list-style-type: none"><li>• Run SmartWorx Viva or SmartWorx Viva LT?</li><li>• Be a CS10 or CS15?</li></ul>
-------------	---

<b>A.2.</b>	Yes, the simulator can be set to run as either a CS10 or a CS15, it can also be set into Lite (LT) Mode, the steps for this are described below:
-------------	--

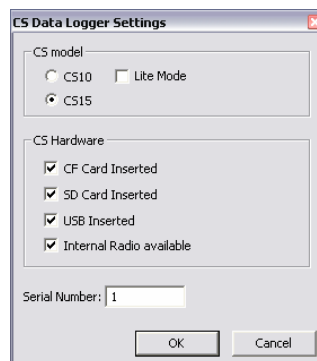
1. Begin the Simulator software...



2. Once the simulator has opened (but before turning it on) select: **Configuration > CS Data Logger Settings**



3. In the CS Data Logger Settings panel the CS model can be selected, here it is also possible to select if the simulator should run the in Lite mode.



Once these settings have been configured as desired the simulator can be turned on and the CS model and Viva mode will be as selected.

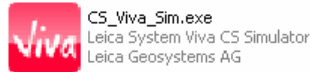
**Q.3.**

Can I simulate TPS measurements with the simulator?

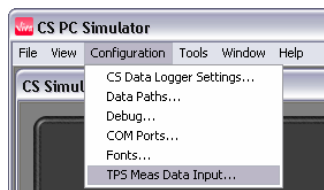
**A.3.**

Yes, simulated TPS measurement data can be entered into the simulator to be used to recreate measurements, allow screenshots, training & make tests, the steps for this are described below:

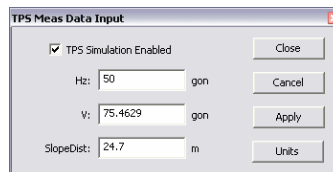
1. Begin the Simulator software...



2. Once the simulator has opened (but before turning it on) select: **Configuration > TPS Meas Data Input**



3. In the TPS Meas Data Input panel the make sure that “TPS Simulation Enabled” is ticked, then press “Apply” and “Close”



Once this setting has been configured the simulator can be turned on and TPS measurement data can be entered in the TPS Meas Data Input panel and seen on the simulator itself

*Note: If the simulated TPS measurement data does not get displayed, follow the troubleshooting steps below:*

1. *Begin the Simulator software, without powering it on*
2. *Enter into the TPS Meas Data Input panel and tick the box*
3. *Press Apply followed by Close*
4. *Close the Simulator program*
5. *Reopen the Simulator program*
6. *Power on the Simulator*

**Q.4.**

Can I simulate GPS measurements with the simulator?

**A.4.**

No, there is no way to simulate GPS measurements or view replay GPS data in the simulator – only TPS data can be simulated